

Cable Clamp Instructions

949-1480

Amphenol's unique cable clamp provides an excellent means of securing fiber optic cables. The clamp features an innovative method of uniformly gripping the cable using multi-diameter grommets. Versions are available for a variety of cable sizes from 4mm to 32mm (0.16" to 1.26"). There are two versions also available which allow for mounting directly to an Amphenol enclosure or to a standard frame.

Cable Size	Panel Mount ¹	Frame Mount
4-13.5 mm (0.16" – 0.53") ²	948-100-5210	948-100-5213
12-22 mm (0.47" – 0.87")	948-100-5211	948-100-5214
22-32 mm (0.87" – 1.26")	948-100-5212	948-100-5215

¹ For Amphenol enclosures only

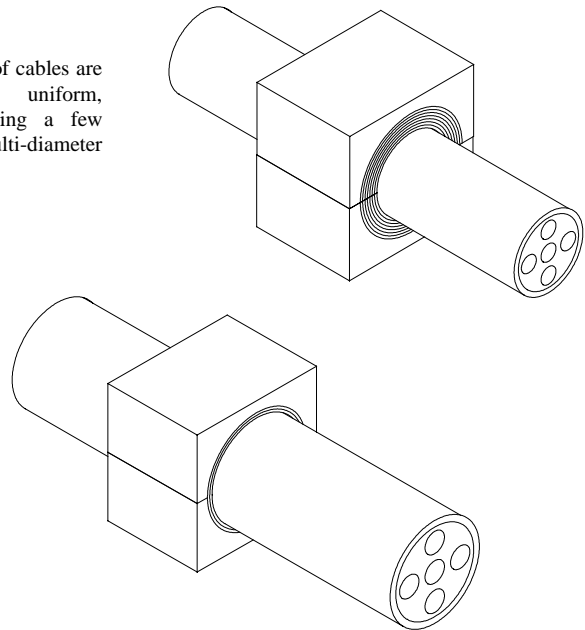
² Secures two cables per clamp

How the multi-diameter grommets work

The multi-diameter grommets can be easily adapted to fit the exact diameter of a wide range of cables. Simply remove a few layers from the center of the grommet, until it fits snugly around the cable. The layers must be removed from both sides equally, being careful not to remove too many. With the multi-diameter grommets properly sized, the cable will be held completely uniform, without causing any degradation or deformation of the cable.

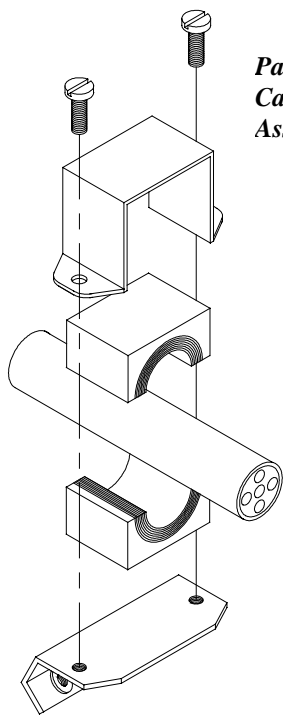


A variety of sizes of cables are held completely uniform, simply by removing a few layers from the multi-diameter grommet.



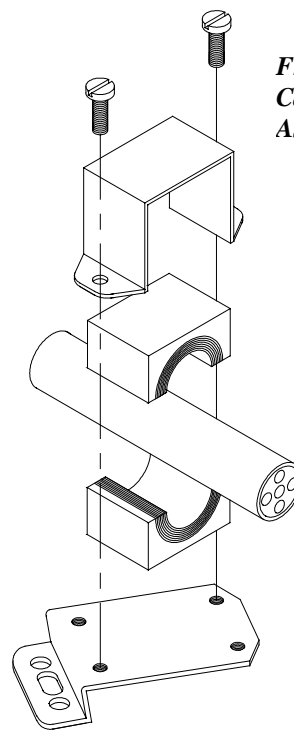
Cable Clamp Assembly

- (a) Be sure the multi-diameter grommet is correctly sized to the cable.
- (b) Locate the position on the cable where the clamp will be fastened.
- (c) With the top half of the multi-diameter grommet in the bracket, place the cable in position.
- (d) Add the bottom half of the multi-diameter grommet and the base, secure using two 10-32 x 3/8" pan head screws.
- (e) Mount the cable clamp: the panel mount clamp should be fastened to the Amphenol enclosure using two 4-40 x 1/4" flat head screws; the frame mount clamp should be fastened to the rack using two 12-24 x 1/2" pan head screws.
- (f) Check the cable to ensure that it is held firmly, tightening as necessary.



*Panel Mount
Cable Clamp
Assembly*

*4-13.5 mm
Panel Mount
Cable Clamp
(948-100-5210)*



*Frame Mount
Cable Clamp
Assembly*

*12-22 mm
Frame Mount
Cable Clamp
(948-100-5214)*

