

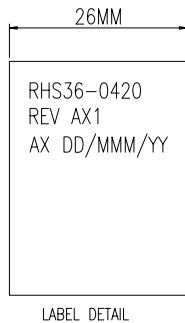
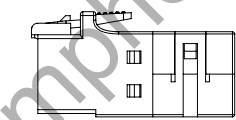
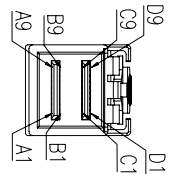
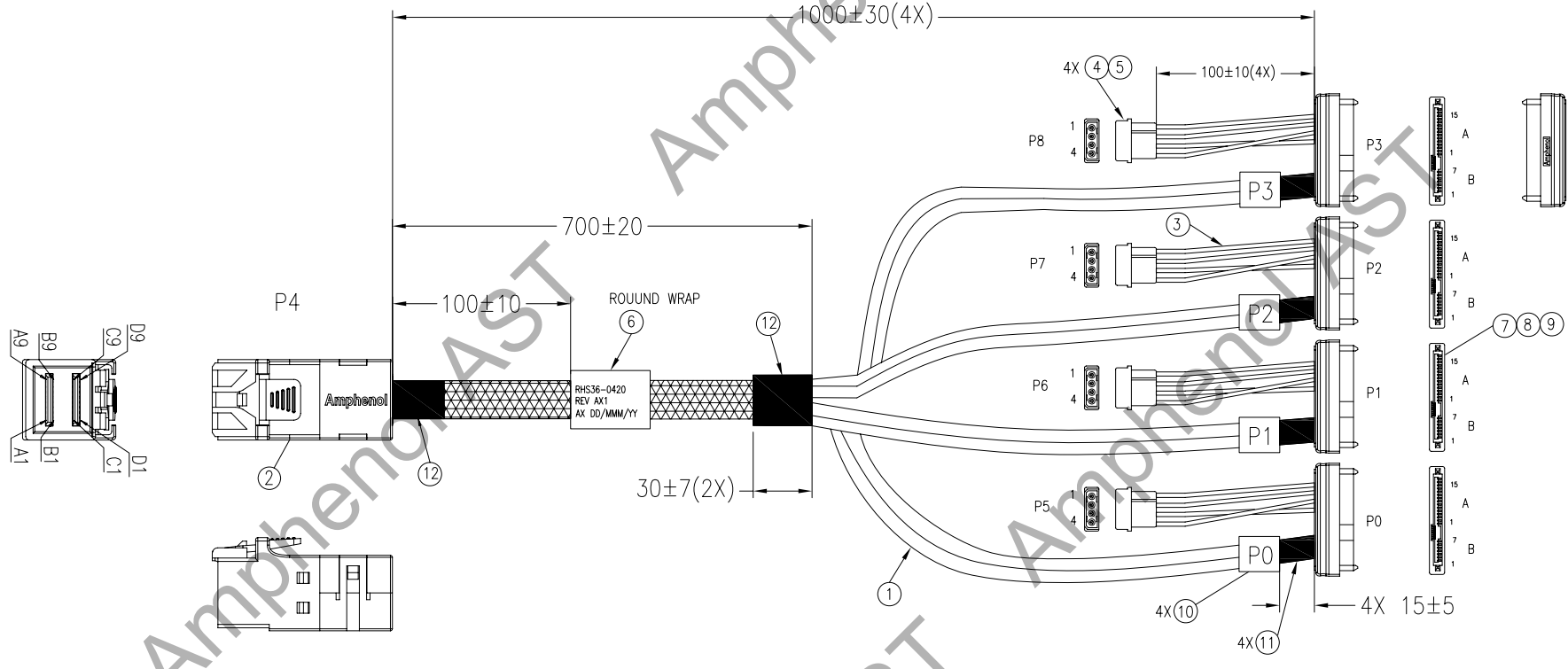
The marking on this product doesn't contain environmental hazardous, materials per directive 2002/95/EC for RoHS compliant.

REVISIONS

ECN NO.	REV.	DESCRIPTIONS	CHECKED	APPROVED	DATE
REL.	AX1	INITIAL RELEASE	JIESS HUANG	DAVID CHAN	08/10/2012

NOTE:

- 1.ELECTRICAL AND MECHANICAL PERFORMANCE SHALL MEET THE SAS3.0 INDUSTRIAL STARDAND (12G).
电气和机械特性遵循SAS3.0工业标准(12G).
- 2.THE CABLE ASSEMBLY SHALL BE RoHS COMPLIANT.
该产品通过RoHS认证.



GENERAL TOLERANCES		This drawing is the property of Amphenol Corporation and is delivered on the express condition that it is not to be disclosed, reproduced or used, in whole or in part, for manufacture or sale by anyone other than Amphenol Corporation without its prior consent, and that no right is granted to disclose or use any information in this drawing.	
.X:	± 0.5	DRAWN:	ENOCH LIN
.XX:	± 0.3	CHECKED:	JIESS HUANG
.XXX:	± 0.01	APPROVED:	DAVID CHAN
ANGULAR:	± 1°	DATE:	08/10/2012

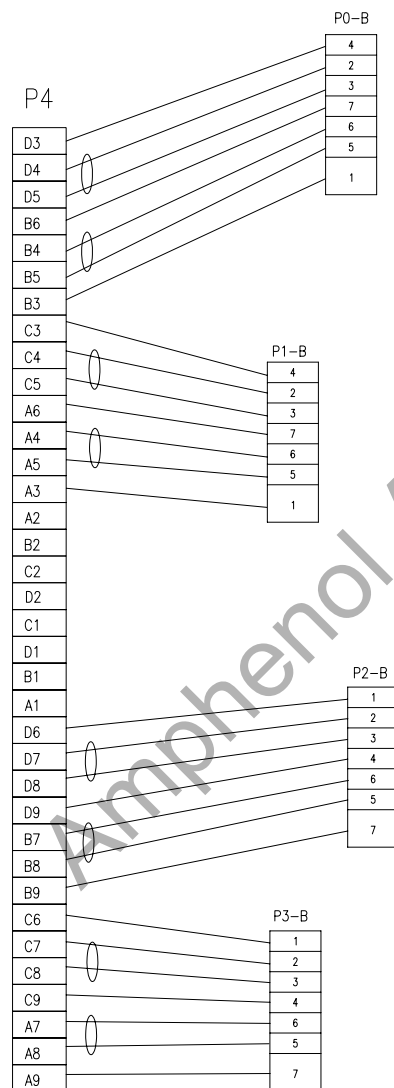
Amphenol
ASSEMBLETECH Co. LTD.

TITLE: SFF8644 MINI SAS HD 36 POS STR TO 8482 4XSAS&POWER			
DWG. No.: RHS36-0420			
SCALE: NONE		SHEET 1 OF 2	
UNIT: MM	SIZE: A4	REV.: AX1	

The marking on this product doesn't contain environmental hazardous, materials per directive 2002/95/EC for RoHS compliant.

REVISIONS

ECN NO.	REV.	DESCRIPTIONS	CHECKED	APPROVED	DATE
REL.					



HD MINI SAS TO SAS WIRE DIAGRAM

ITEM	P/N	DESCRIPTION	QTY
12	RMMP00036	ACETOUS Tape:30mm WIDE,3 0M/REEL,BLK	A/R
11	RMMP00011	TAPE:ACETATE CLOTH INSULATION,19MM,BLK	A/R
10	RMLSB07301	PPID LABEL:7*30MM,WHT	4
9	RCSS22F003	SAS CONN:22P,F,PB,Au15u",PBT,BLK	4
8	HMRPV45101	OVERMOLD, PVC, BLACK	A/R
7	RMRPE45NT1	PE:LOW DENSITY,CLEAR	A/R
6	HMLSB57262	LABEL:57*26MM,BLANK	A/R
5	RT50800006	TERM:M,BRS,TIN,18~24#,Reel	16
4	RH50804005	HSG:4P,5.08PH,NL66,VO,NATURAL	4
3	R10070220X	WIRE,22AWG,UL1007,STRANDED	A/R
2	AST8644-0036	EXTERNAL HD MINI SAS 36POS STRAIGHT	1
1	(R)202023001	SAS CBL:30AWG*2C+2EAM,0.9*2.3,NATURAL	A/R

GENERAL TOLERANCES

.X:	± 0.5
.XX:	± 0.3
.XXX:	± 0.01
ANGULAR:	± 1°

This drawing is the property of Amphenol Corporation and is delivered on the express condition that it is not to be disclosed, reproduced or used, in whole or in part, for manufacture or sale by anyone other than Amphenol Corporation without its prior consent, and that no right is granted to disclose or use any information in this drawing.

Amphenol
ASSEMBLETECH Co. LTD.

TITLE:		SFF8644 MINI SAS HD 36 POS STR TO 8482 4XSAS&POWER	
DRAWN:		DATE:	
EPOCH LIN		08/10/2012	
CHECKED:		DATE:	
JIESS HUANG		08/10/2012	
APPROVED:		DATE:	
DAVID CHAN		08/10/2012	
DWG. No.: RHS36-0420		SCALE: NONE	
UNIT: MM		SHEET 2 OF 2	
SIZE: A4		REV.: AX1	