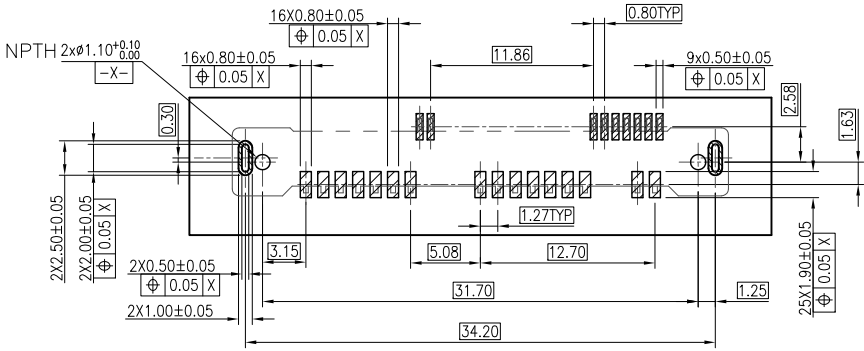
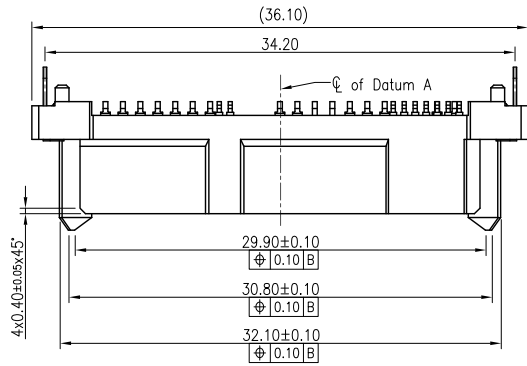


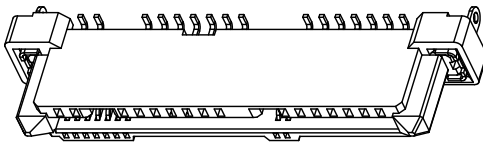
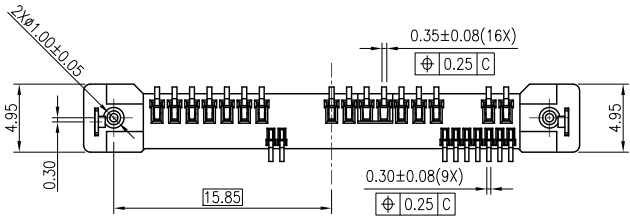
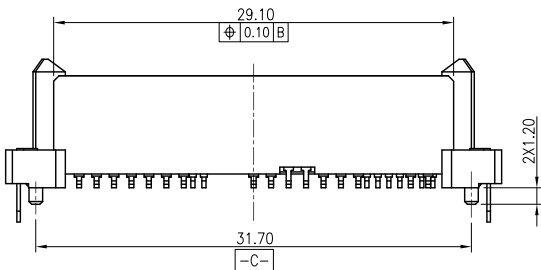
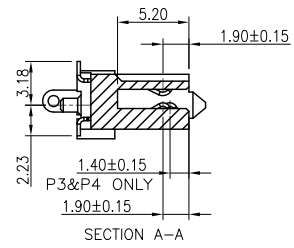
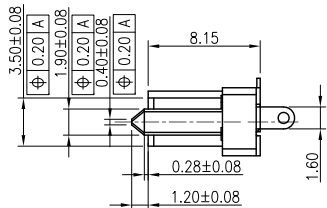
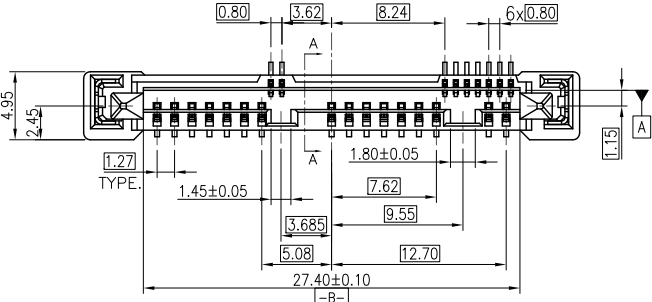
This document is the property of Amphenol Corporation and is delivered on the express condition that it is not to be disclosed, reproduced or used, in whole or in part, for manufacture or sale by anyone other than Amphenol Corporation without its prior consent, & that no right is granted to disclose or to use any information in this document.

REVISIONS				
SYM	ECN	DESCRIPTION	DATE	APPROVED
1	HK6995	FIRST RELEASE	05/27/13	IP
2	HK---	PCB change by SI requestment	11/12/13	IP



RECOMMENDED PCB LAYOUT(TOP VIEW)  
TOLERANCE +/-0.05mm

- NOTES :
- Material:  
Plastic: High thermoplastic,UL 94V-0,Black  
Contact: copper alloy  
Solder Tab: copper alloy
  - Finished:  
All contacts:  
Contact area: Gold plating, Solder tails: Tin plated over Nickel underplated  
Solder Tab: Tin plating,nickel plating underplated
  - Electrical performance:  
3.1 Current rating: 1.5A/contact  
3.2 Dielectric strength: 500V for 1 minute  
3.3 Insulation resistance: 1000MΩ  
3.4 Operation temperature: 0°C to +55°C
  - Order p/n system:  
MSAS3-F313-003-X-XX  
Plating on contact mating area: 1-0.76μm MIN Gold plating  
2-0.38μm MIN Gold plating  
3-Gold flash  
4-G/F over PdNi  
Packing method: Nil: Tray without cover  
C: Tray with Cover  
TR: Tape and Reel with Cover
  - Dimensioning shall be interpreted per ASME Y14.5M 1994
  - Material should be fulfilled Amphenol SPEC.# S-SN-002, for halogen free products,also need to meet S-SN-004



PROPOSED DRAWING

UNLESS OTHERWISE SPECIFIED TOLERANCES		APPROVAL		DATE	Amphenol Amphenol East Asia Limited
U.S.	METRIC	DRAWN	Checked	11/12/13	
0.0	+/-	0.45	Checked		TITLE CUSTOMER DRAWING FOR MICRO SAS VERTICAL SMT Socket
0.00	+/-	0.25	Checked		
0.000	+/-	0.20	Checked		
FRACTIONS	+/-	0.20			SIZE DRAWING NO. A3 C MSAS3-F313-003-X-XX 2
ANGLES	+/-	5°			
FOR MATERIALS AND FINISHES SEE NOTES		DRAWING FILE :		SCALE N/A	
REMOVE SHARP EDGES		DRAWING NO. / DATE		SHEET 1 OF 1	
DIMENSIONS		ANGLE OF PROJECTION			
U.S.	INCHES	FIRST ANGLE			
(METRIC)	(MM)				