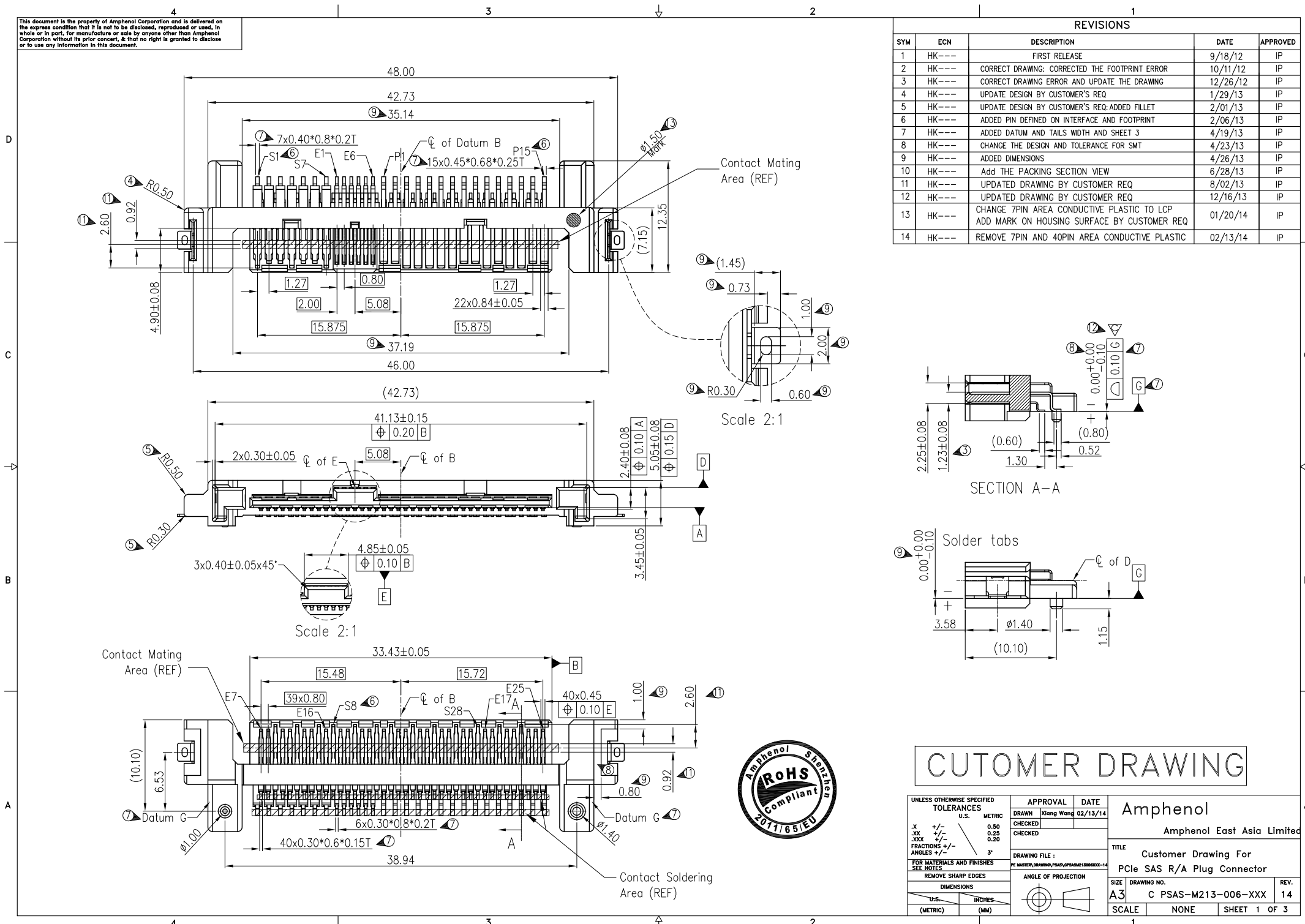


This document is the property of Amphenol Corporation and is delivered on the express condition that it is not to be disclosed, reproduced or used, in whole or in part, for manufacture or sale by anyone other than Amphenol Corporation without its prior consent, & that no right is granted to disclose or to use any information in this document.

REVISIONS				
SYM	ECN	DESCRIPTION	DATE	APPROVED
1	HK---	FIRST RELEASE	9/18/12	IP
2	HK---	CORRECT DRAWING: CORRECTED THE FOOTPRINT ERROR	10/11/12	IP
3	HK---	CORRECT DRAWING ERROR AND UPDATE THE DRAWING	12/26/12	IP
4	HK---	UPDATE DESIGN BY CUSTOMER'S REQ	1/29/13	IP
5	HK---	UPDATE DESIGN BY CUSTOMER'S REQ: ADDED FILLET	2/01/13	IP
6	HK---	ADDED PIN DEFINED ON INTERFACE AND FOOTPRINT	2/06/13	IP
7	HK---	ADDED DATUM AND TAILS WIDTH AND SHEET 3	4/19/13	IP
8	HK---	CHANGE THE DESIGN AND TOLERANCE FOR SMT	4/23/13	IP
9	HK---	ADDED DIMENSIONS	4/26/13	IP
10	HK---	ADD THE PACKING SECTION VIEW	6/28/13	IP
11	HK---	UPDATED DRAWING BY CUSTOMER REQ	8/02/13	IP
12	HK---	UPDATED DRAWING BY CUSTOMER REQ	12/16/13	IP
13	HK---	CHANGE 7PIN AREA CONDUCTIVE PLASTIC TO LCP ADD MARK ON HOUSING SURFACE BY CUSTOMER REQ	01/20/14	IP
14	HK---	REMOVE 7PIN AND 40PIN AREA CONDUCTIVE PLASTIC	02/13/14	IP



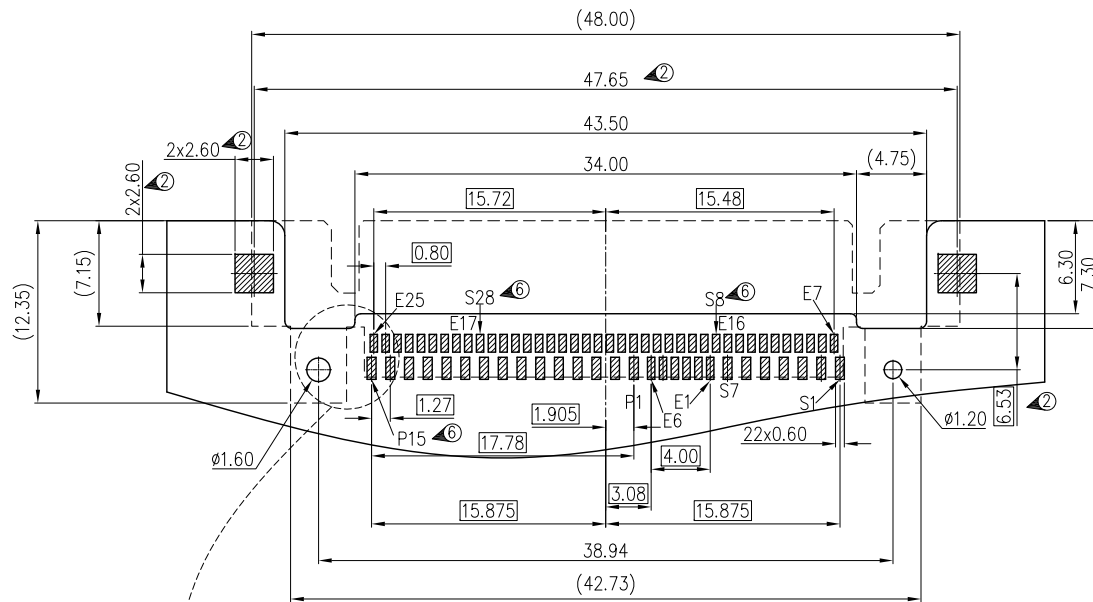
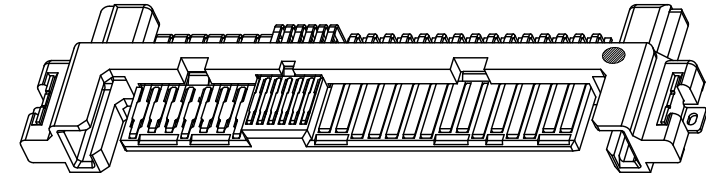
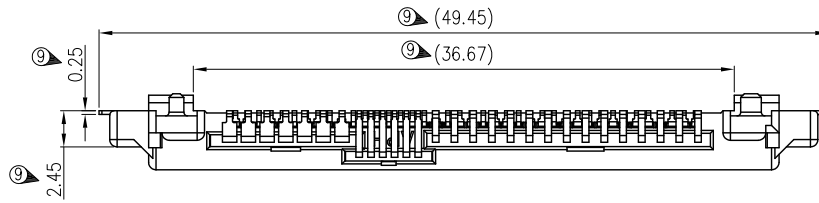
CUSTOMER DRAWING

UNLESS OTHERWISE SPECIFIED TOLERANCES		APPROVAL		DATE		Amphenol	
U.S. METRIC		DRAWN Xiang Wang		02/13/14		Amphenol East Asia Limited	
.XX +/- 0.50		CHECKED				TITLE	
.XXX +/- 0.25		CHECKED				Customer Drawing For	
FRACTIONS +/- 0.20		DRAWING FILE:		PC_MATER_DRAWING_PSAE_CPSAS_M213_020813-14		PCle SAS R/A Plug Connector	
ANGLES +/- 3°		REMOVE SHARP EDGES		ANGLE OF PROJECTION		SIZE DRAWING NO.	
FOR MATERIALS AND FINISHES SEE NOTES						A3 C PSAS-M213-006-XXX 14	
DIMENSIONS		U.S. INCHES		SCALE		SHEET 1 OF 3	
(METRIC)		(MM)		NONE			

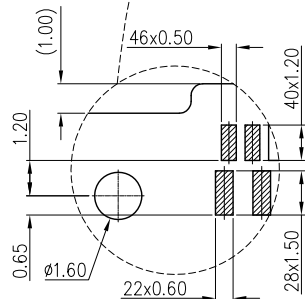


This document is the property of Amphenol Corporation and is delivered on the express condition that it is not to be disclosed, reproduced or used, in whole or in part, for manufacture or sale by anyone other than Amphenol Corporation without its prior consent, & that no right is granted to disclose or to use any information in this document.

REVISIONS				
SYM	ECN	DESCRIPTION	DATE	APPROVED
REFER TO SHEET 1				



RECOMMENDED PCB LAYOUT



Scale 2:1



NOTES:

- Material housing: High temperature thermoplastic UL94V-0, color: black.
Contact: Brass
Plating: Refer to P/N system on mating area.
1.27~2.54um Nickel underplate overall.
2.54~5.08um matte pure Tin on solder tail.
- Electrical specification:
 - Current rating: 1.5A (Power section).
 - Contact resistance: 30mΩ MAX.
 - Insulator resistance: 1000MΩ MIN.
 - Dielectric withstanding voltage: 500 VAC
 - Operation temperature: -0°C~+55°C
- Dimensioning shall be interpreted per ASME Y14.5M 1994
- Material should be fulfilled Amphenol SPEC.# S-SN-002, for halogen free products,also need to meet S-SN-004
- Solder tails and solder tabs co-planarity 0.10mm MAX
- Order p/n system : PSAS-M213-006-X-XX

MATING AREA PLATING	PACKING STYLE
1- 0.76um MIN Au.	NIL- TRAY
2- 0.38um MIN Au.	TR- TAPE AND REEL
3- Gold FLASH	

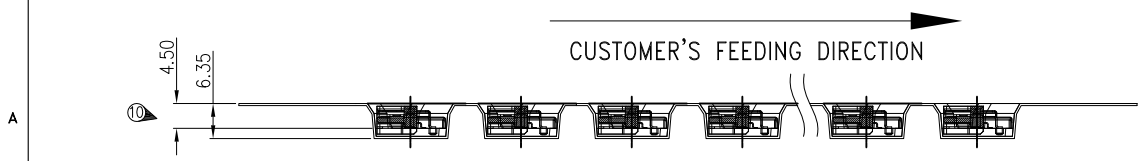
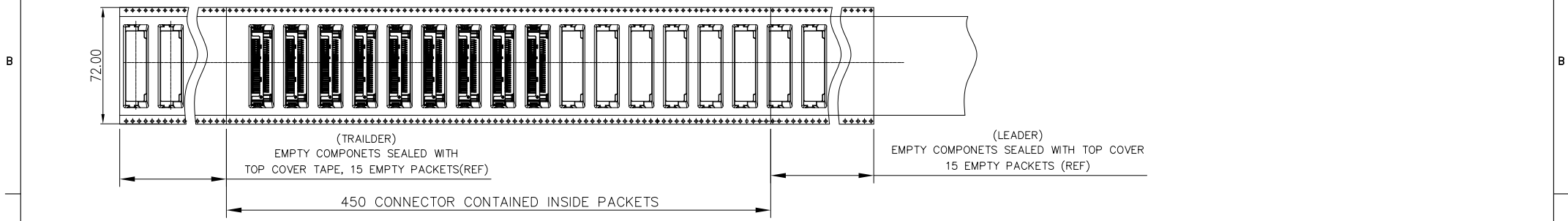
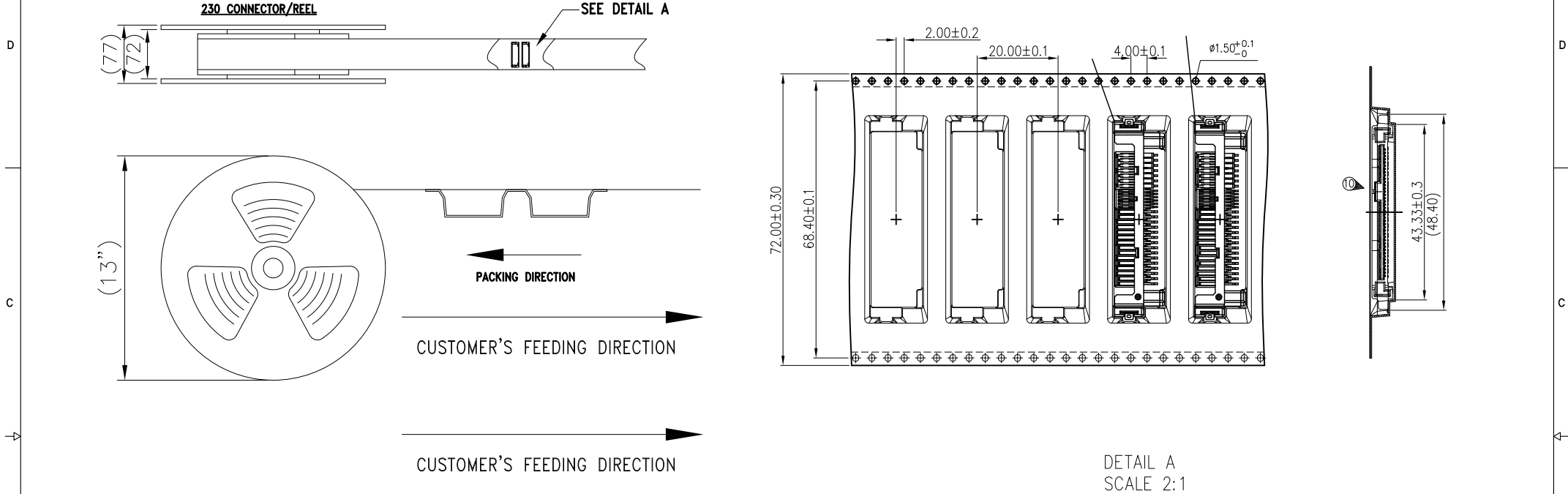
- Mechanical specification:
 - Connector Mating force is 59N Max and unmating force is 12N Min.
 - 7PIN/6PIN/15PIN overmolding housing retaining force is 5N Min, 40PIN per-contact retaining force is 2N Min.
- Dimension marked Ⓢ should be checked by QC and process engineers, and Ⓣ should also check the CPK data
- This Custom PCIe just meet PCIe Gen 3.0 Spec.

CUSTOMER DRAWING

UNLESS OTHERWISE SPECIFIED TOLERANCES	U.S.	METRIC	APPROVAL	DATE	Amphenol Amphenol East Asia Limited
	X .XX .XXX FRACTIONS ANGLES	+/- +/- +/- 3'	0.50 0.25 0.20	DRAWN: Xiang Wang CHECKED: DATE: 02/13/14	
FOR MATERIALS AND FINISHES SEE NOTES	REMOVE SHARP EDGES		DRAWING FILE: PC_MATER_DWG/PSAS/PSAS_CPSAS/12080202-14		SIZE A3
DIMENSIONS		ANGLE OF PROJECTION		SCALE	DRAWING NO. C PSAS-M213-006-XXX
U.S. (METRIC)		INCHES (MM)		SCALE	REV. 14
				1	SHEET 2 OF 3

This document is the property of Amphenol Corporation and is delivered on the express condition that it is not to be disclosed, reproduced or used, in whole or in part, for manufacture or sale by anyone other than Amphenol Corporation without its prior consent, & that no right is granted to disclose or to use any information in this document.

REVISIONS				
SYM	ECN	DESCRIPTION	DATE	APPROVED
REFER TO SHEET 1				



DETAIL A
SCALE 2:1



CUSTOMER DRAWING

UNLESS OTHERWISE SPECIFIED TOLERANCES U.S. METRIC .X +/- 0.50 .XX +/- 0.25 .XXX +/- 0.20 FRACTIONS +/- ANGLES +/- 3° FOR MATERIALS AND FINISHES SEE NOTES	APPROVAL DRAWN: Xiang Wang CHECKED: [] DATE: 02/13/14	Amphenol Amphenol East Asia Limited TITLE: Customer Drawing For PCIe SAS R/A Plug Connector SIZE: A3 SCALE: NONE		
	REMOVE SHARP EDGES DIMENSIONS U.S. INCHES (METRIC) (MM)		ANGLE OF PROJECTION 	DRAWING FILE: PC_MATER_DWG/M213/PSAS_CPLASHE12008020-14 DRAWING NO. C PSAS-M213-006-XXX REV. 14
	SHEET 3 OF 3			
	SHEET 3 OF 3			