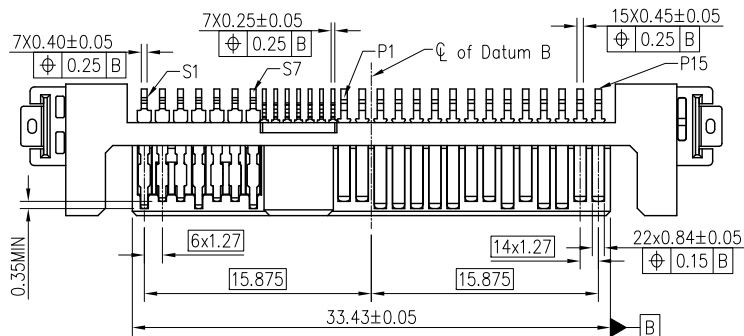
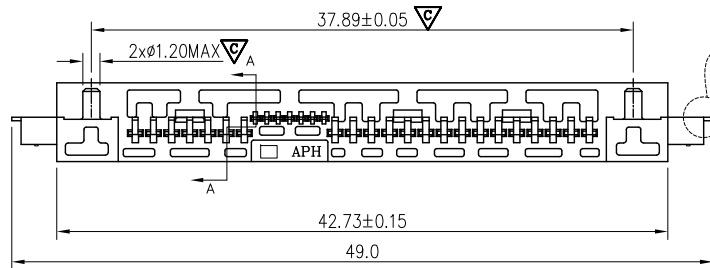
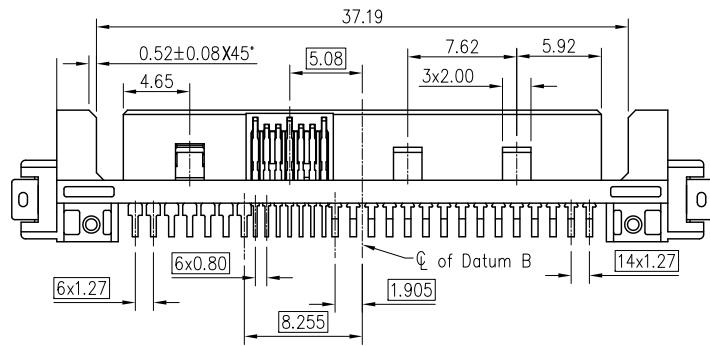
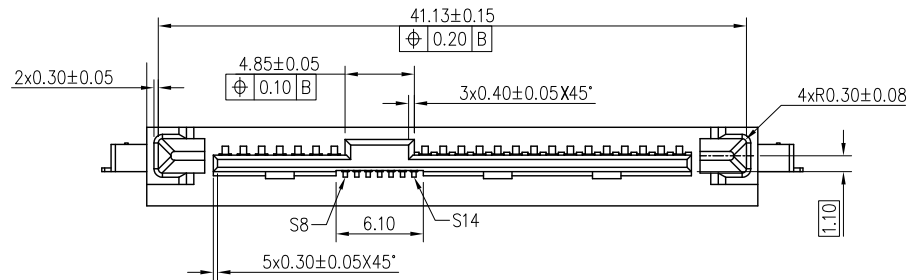
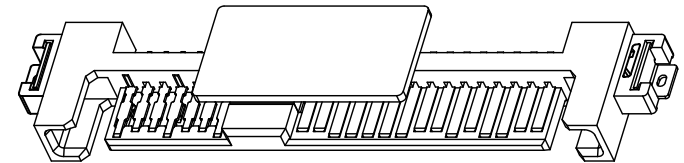
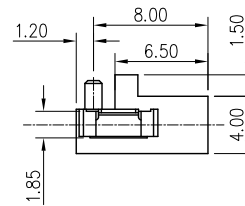
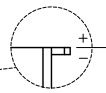


This document is the property of Amphenol Corporation and is delivered on the express condition that it is not to be disclosed, reproduced or used, in whole or in part, for manufacture or sale by anyone other than Amphenol Corporation without the prior consent, & that no right is granted to disclose or to use any information in this document.

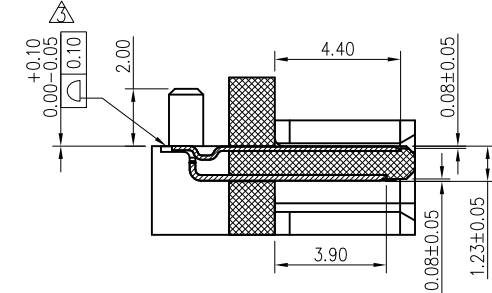
REVISIONS				
SYM	ECN	DESCRIPTION	DATE	APPROVED
1	N/A	FIRST RELEASE	09/15/13	IP
2	HK7030	INCREASE 1.5mm HEIGHT HOUSING BY CUSTOMER REQ	02/10/14	IP



Solder tabs



Solder tails



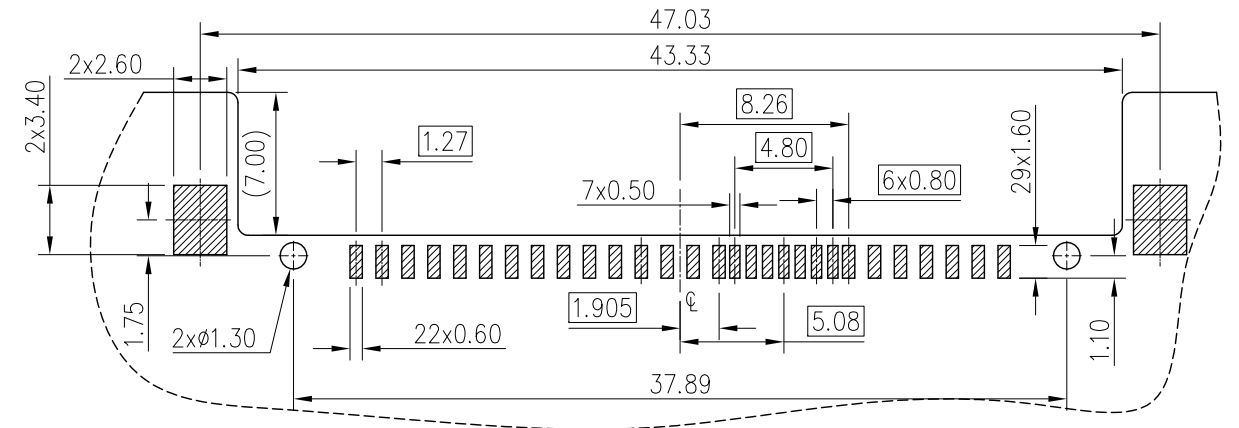
SECTION A-A



UNLESS OTHERWISE SPECIFIED TOLERANCES		APPROVAL		DATE	Amphenol Amphenol East Asia Limited
U.S.	METRIC	DRAWN	Checked	02/10/14	
0.0	+/-	0.40	Power.Xiao		TITLE CUSTOMER DRAWING FOR 12G R/A SMT PLUG
0.00	+/-	0.25			
0.000	+/-				SIZE DRAWING NO. A3 C SAS3-M313-006-X-XX
FRACTIONS	+/-				
ANGLES	+/-	°			REV. 2
FOR MATERIALS AND FINISHES SEE NOTES		DRAWING FILE :		SCALE	
REMOVE SHARP EDGES		DRAWING'S SAS/CSAS/M31300000-2		N/A	
DIMENSIONS		ANGLE OF PROJECTION		SHEET 1 OF 2	
U.S.	INCHES	FIRST ANGLE		1	
(METRIC)	(MM)				

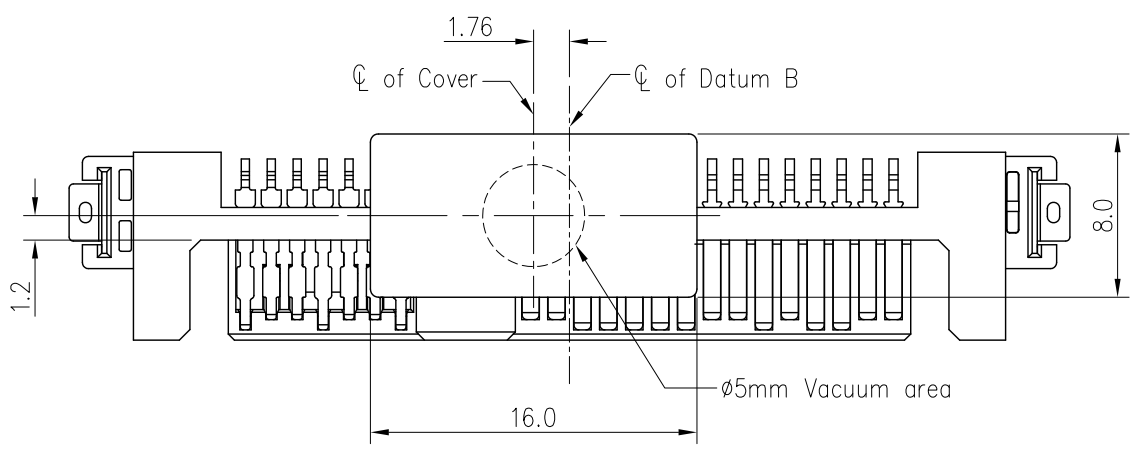
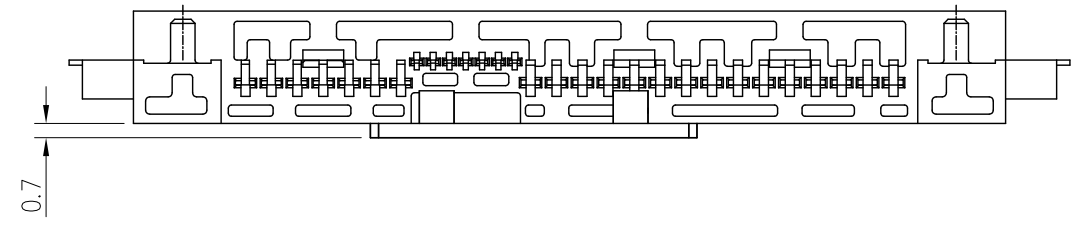
This document is the property of Amphenol Corporation and is delivered on the express condition that it is not to be disclosed, reproduced or used, in whole or in part, for manufacture or sale by anyone other than Amphenol Corporation without its prior consent, & that no right is granted to disclose or to use any information in this document.

REVISIONS				
SYM	ECN	DESCRIPTION	DATE	APPROVED
REFER TO SHEET 1				



RECOMMENDED PCB LAYOUT
GENERAL TOLERANCE ±0.05

WITH PICK COVER



NOTES:

- MATERIAL**
 HOUSING: HIGH TEMPERATURE PLASTIC UL94V-0, BLACK.
 CONTACT: COPPER ALLOY
 SOLDER TAB: COPPER ALLOY
 CONTACTS PLATING: REFER TO P/N SYSTEM ON MATING AREA
 1.27~2.54um NICKEL UNDERPLATED OVERALL
 2.54~5.08um PURE TIN ON SOLDER TAIL
 SOLDER TAB PLATING: 1.27~2.54um NICKEL UNDERPLATED OVERALL
 2.54~5.08um PURE TIN ON SOLDER TAIL
- ELECTRICAL SPECIFICATION:**
 CURRENT RATING: 1.5A
 CONTACT RESISTANCE: 30m Ω MAX.
 INSULATOR RESISTANCE: 100M Ω MIN.
 DIELECTRIC WITHSTANDING VOLTAGE: 500V AC
- ALL SOLDER TAILS AND 2 SOLDER TABS CO-PLANARITY SPEC IS 0.10MM MAX
- DIMENSION MARKED WITH a triangle symbol IS CRITICAL DIMENSION, CPK>1.33 IS REQUIRED.
- ORDER P/N SYSTEM: SAS3-M313-006-X-XX

MATING AREA PLATING	PACKING STYLE
1- 0.76um MIN Au.	NIL- TRAY
2- 0.38um MIN Au.	TR- TAPE AND REEL WITH PICK COVER
3- Gold FLASH	C- TRAY WITH PICK COVER



UNLESS OTHERWISE SPECIFIED TOLERANCES		APPROVAL		DATE	Amphenol Amphenol East Asia Limited	
U.S. METRIC		DRAWN	Power.Xiao	02/10/14		
0.0	+/- 0.40	CHECKED			TITLE CUSTOMER DRAWING FOR 12G R/A SMT PLUG	
0.00	+/- 0.25	CHECKED				
0.000	+/-	DRAWING FILE :			SIZE DRAWING NO. REV. A3 C SAS3-M313-006-X-XX 2	
FRACTIONS	+/-	DRAWING\SAS\CSAS3M313006XXX-2				
ANGLES	+/- 5°	REMOVE SHARP EDGES		ANGLE OF PROJECTION		
DIMENSIONS		U.S. INCHES		SCALE N/A SHEET 2 OF 2		
		(METRIC) (MM)				