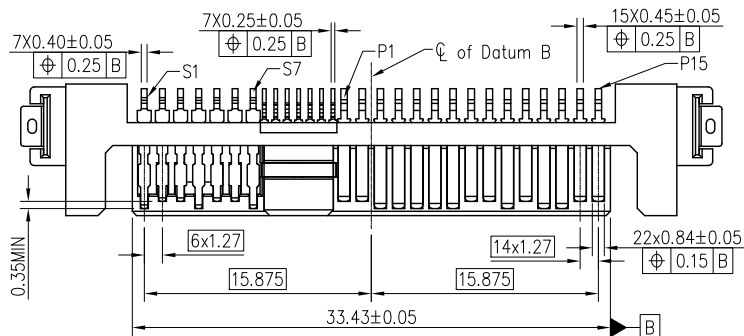
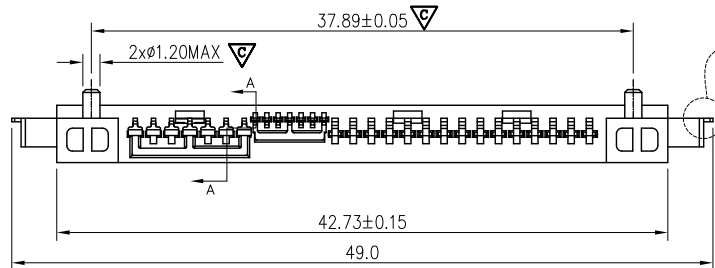
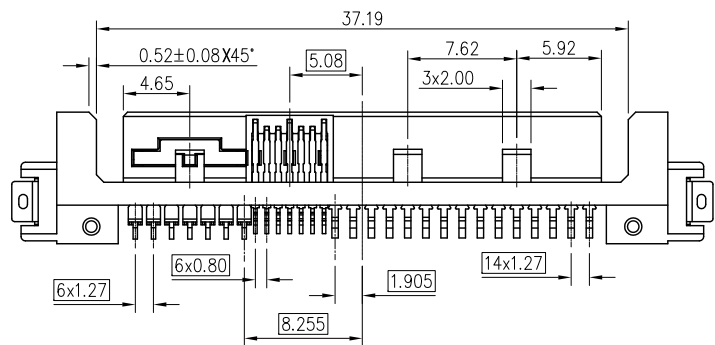
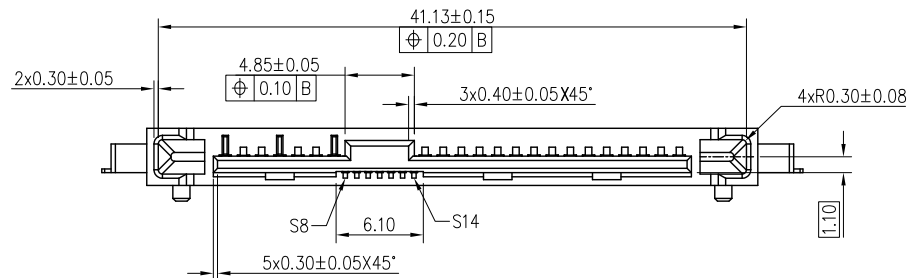
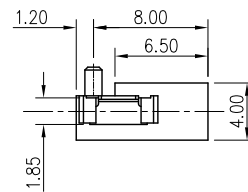


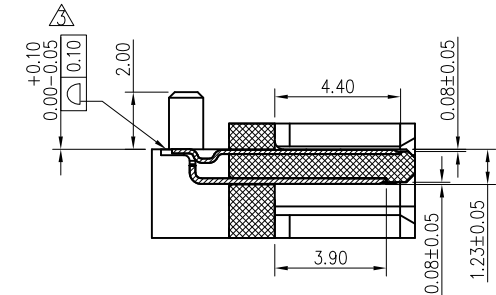
This document is the property of Amphenol Corporation and is delivered on the express condition that it is not to be disclosed, reproduced or used, in whole or in part, for manufacture or sale by anyone other than Amphenol Corporation without the prior consent, & that no right is granted to disclose or to use any information in this document.



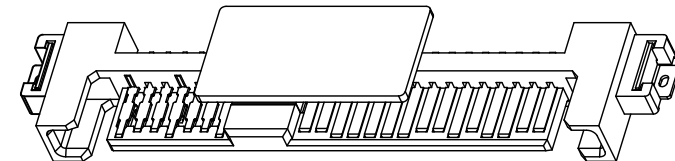
Solder tabs



Solder tails



SECTION A-A



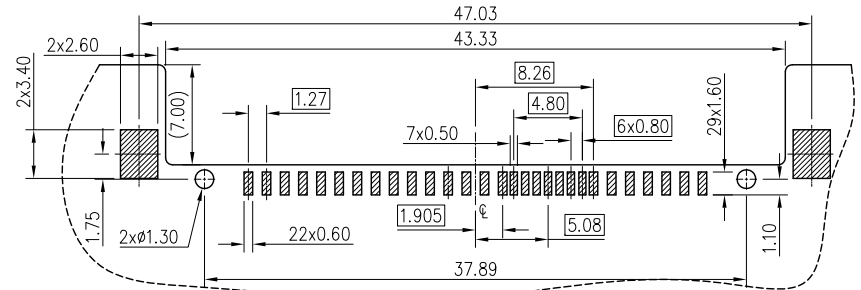
REVISIONS				
SYM	ECN	DESCRIPTION	DATE	APPROVED
1	N/A	FIRST RELEASE	6/14/11	IP
2	N/A	UPDATE DRAWING BY CUSTOMER REQ	9/27/11	IP
3	N/A	ADDED CO-PLANARITY SPEC	10/08/11	IP
4	N/A	UPDATE DRAWING FOR SI PERFORMANCE	10/13/11	IP
5	N/A	UPDATE DRAWING FOR SI PERFORMANCE	10/27/11	IP
6	N/A	CORRECT DRAWING	11/09/11	IP
7	HK6666	ADD PCB LAYOUT HOLE DIMENSIONS ADD PCB LAYOUT GENERAL TOLERANCE	11/15/11	IP
8	N/A	FIRST RELEASE FOR MASS PRODUCTION	01/30/12	IP
9	N/A	CHANGED SOLDER TAB AREA: 1.85 WAS 1.70	03/22/12	IP
10	HK6764	ADDED PICK COVER BY CUSTOMER'S REQ, UPDATE PN SYSTEM ADDED SHEET 2	05/17/12	IP
11	N/A	ADDED SOLDER TABS POSITION DIMENSION	07/20/12	IP
12	N/A	CHANGED TAILS AND SOLDER TABS POSITION DIMENSION BY CUSTOMER'S REQ 0.00+0.10/-0.05 WAS 0.00+0.00/-0.10, 1.20MAX WAS 1.2+/-0.25	07/20/13	IP
13	N/A	UPDATE DRAWING BY CUSTOMER REQ-ENLARGED SECTION A-A VIEW, ADD PIN LENGTH DIMENSION 4.40 AND 3.90	9/10/13	IP
14	HK6982	CHANGE PEG-TO-PEG PITCH TOLERANCES 37.89±0.05 WAS 37.89±0.25 ADD CPK CONTROL ON PEG AND PEG-TO-PEG PITCH DIMENSION	9/12/13	IP

CUSTOMER DRAWING

UNLESS OTHERWISE SPECIFIED TOLERANCES		APPROVAL		DATE	Amphenol Amphenol East Asia Limited
0.0	+/-	U.S.	DRAWN	Power.Xiao	
0.00	+/-	METRIC	CHECKED		
0.000	+/-		CHECKED		
FRACTIONS	+/-				
ANGLES	+/-	°			
FOR MATERIALS AND FINISHES SEE NOTES		DRAWING FILE :		TITLE	
REMOVE SHARP EDGES		ANGLE OF PROJECTION		CUSTOMER DRAWING FOR	
DIMENSIONS		U.S. INCHES		SIZE DRAWING NO.	
(METRIC) (MM)		INCHES (MM)		A3 C SAS-M313-007-X-XX	
				REV. 13	
				SHEET 1 OF 2	

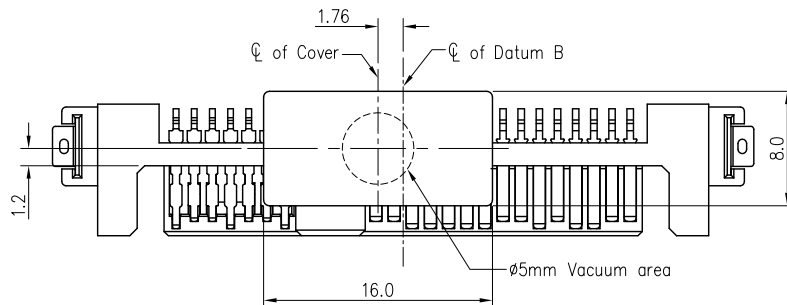
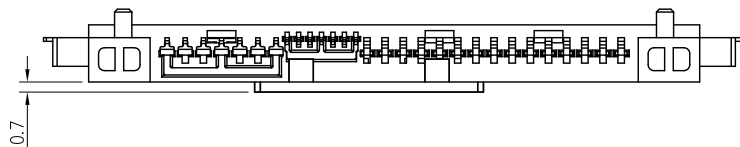
This document is the property of Amphenol Corporation and is delivered on the express condition that it is not to be disclosed, reproduced or used, in whole or in part, for manufacture or sale by anyone other than Amphenol Corporation without its prior consent, & that no right is granted to disclose or to use any information in this document.

REVISIONS				
SYM	ECN	DESCRIPTION	DATE	APPROVED
REFER TO SHEET 1				



RECOMMENDED PCB LAYOUT
GENERAL TOLERANCE ±0.05

WITH PICK COVER



NOTES:

1.MATERIAL

HOUSING: HIGH TEMPERATURE PLASTIC UL94V-0, BLACK.

CONTACT: COPPER ALLOY

SOLDER TAB: COPPER ALLOY

CONTACTS PLATING: REFER TO P/N SYSTEM ON MATING AREA

1.27~2.54um NICKEL UNDERPLATED OVERALL

2.54~5.08um PURE TIN ON SOLDER TAIL

SOLDER TAB PLATING: 1.27~2.54um NICKEL UNDERPLATED OVERALL

2.54~5.08um PURE TIN ON SOLDER TAIL

2.ELECTRICAL SPECIFICATION:

CURRENT RATING: 1.5A

CONTACT RESISTANCE: 30m Ω MAX.

INSULATOR RESISTANCE: 1000M Ω MIN.

DIELECTRIC WITHSTANDING VOLTAGE: 500V AC

⚠ ALL SOLDER TAILS AND 2 SOLDER TABS CO-PLANARITY SPEC IS 0.10MM MAX

5. DIMENSION MARKED ∇ IS CRITICAL DIMENSION, CPK>1.33 IS REQUIRED.

6. ORDER P/N SYSTEM: SAS-M313-007-X-XX

MATING AREA PLATING

1- 0.76um MIN Au.

2- 0.38um MIN Au.

3- Gold FLASH

PACKING STYLE

NIL- TRAY

TR- TAPE AND REEL WITH PICK COVER

C- TRAY WITH PICK COVER



CUSTOMER DRAWING

UNLESS OTHERWISE SPECIFIED TOLERANCES		APPROVAL		DATE	Amphenol Amphenol East Asia Limited	
	U.S.	METRIC	DRAWN	Power.Xiao		11/20/13
0.0	+/-	0.40	CHECKED			
0.00	+/-	0.25	CHECKED			
0.000	+/-		CHECKED			
FRACTIONS	+/-					
ANGLES	+/-	5°				
FOR MATERIALS AND FINISHES SEE NOTES		REMOVE SHARP EDGES		ANGLE OF PROJECTION		
DIMENSIONS		U.S.		INCHES		
(METRIC)		(MM)				
				SIZE DRAWING NO.		
				A3 C SAS-M313-007-X-XX		
				REV. 13		
				SCALE N/A SHEET 2 OF 2		